



Company Profile

SEDA Filter

Company Profile

SEDA Filter SEDA Filter is a newly emerging factory-direct wholesaler with the aim of providing the best products to the global market at the optimum price, based on 35 years of manufacturing experience.

| | |
|-------------------------|----------------------------------------------------------------|
| Company | SEDA Filter |
| Email | sales@sedafilter.com |
| Factory Location | Republic of Korea |
| Plant Size | 4,784m ² |
| Building Size | 2,391m ² |



Overview

New start Factory Direct Wholesales

We have been specialists in the filtration business for more than **35 years**. We are one of leading **filter manufacturer** in South Korea, supplying tailor-made solutions for diverse industries and major companies.

With new brand name '**SEDA filter**', ensures flexible and cost-efficient filtration solutions, from **small, customer-specific orders** all the way **to large-scale** mass production for all operating environments throughout the world.

Our Business Mission

The most important goals of SEDA Filter is the **satisfaction of our customers** and the continuous improvement of trustworthy relationship.

We provide **high quality, high performance** filtration product that are built to last, and designed to help **maximise the lifespan** of your machinery, providing real **long-term value**.

II. Business

Prepared Partners

Production Item List

Gas Turbine Filter

Turbo Compressor
1st and 2nd filters

Median filter

Oil separator

Oil-Water separator
filter

Line filter

Hydraulic filter

PALL, HYDAC, MAHLE
TAISEI Alternate
hydraulic filter

Plasma
concentration filter

Dust filter

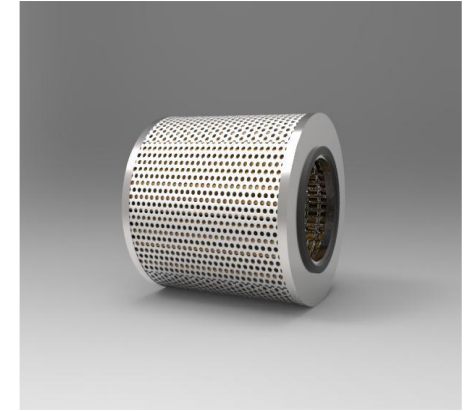
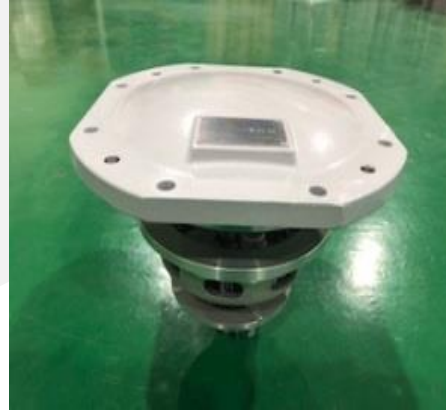
Sus mesh filter

Micro filter

Major Production Item List

MAN , HYUNDAI HiMSEN
Engine Marine Gensets
(Cover & Element)

H17/28
H21/32
H25/33
H27/38
H32/40H
H32/40V



MAN Diesel & Turbo



**HYUNDAI
HiMSEN**

Major Production Item List

F.O Filter & F.O Filter Element



M.P Filter & M.P Filter Element



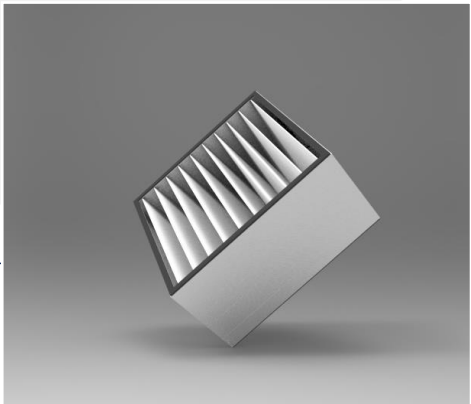
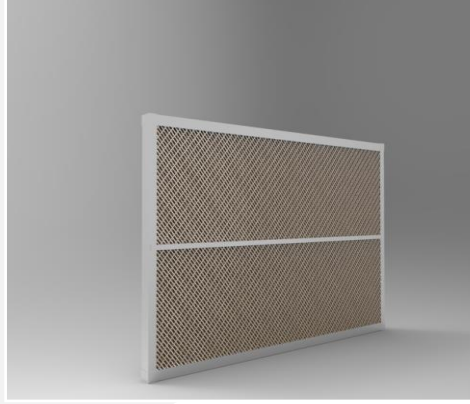
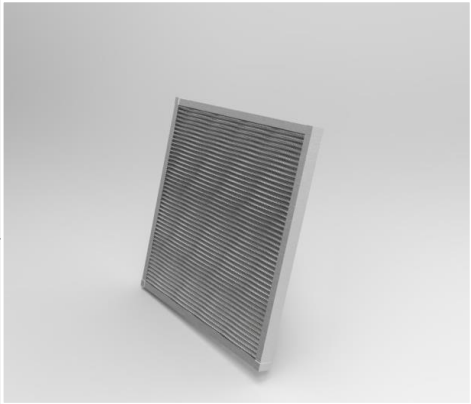
HYUNDAI HiMSEN Engine spare parts

Major Production Item List



| Filter Name | Turbo Compressor Air Filter |
|--------------|-----------------------------|
| Purpose | Air Intake filter |
| Dimensions | ø390xø260x490L |
| | ø420xø280x360L |
| | ø420xø280x550L |
| Filter Class | ≤ 95% 2Micron |
| Media | Cellulose + Nano |

Major Production Item List



| Filter Name | Turbo Compressor Air 1 st Pre Filter |
|--------------|-------------------------------------------------|
| Purpose | Pre filter |
| Dimensions | 595x595x38T |
| Filter Class | 98% 10 Micron |
| Media | PRAMEC |
| Frame | G.I |

| Filter Name | Turbo Compressor Air 2nd Pre Filter |
|--------------|-------------------------------------|
| Purpose | Final filter |
| Dimensions | 595x595x295T |
| Filter Class | 99.97% 2Micron |
| Media | Glass + P.E (3 layers) |
| Frame | Aluminium |

Major Production Item List



| Filter Name | Gas Turbine Intake Air Filter |
|-------------------------------|------------------------------------------------------------------------------------|
| Dimensions | Cylindrical $\varnothing 324 \times 660L$ Conical $\varnothing 445 \times 660L$ |
| Filter Class | \leq MERV15 (EN779:2002 / \leq F8) |
| Flow Rate | 21CMM |
| Initial Differential Pressure | ≥ 0.71 (Inch.H2O) |
| Media | Synthetic(100%) + Nano, Polyester |
| Cap/Core | E.G.I |

Major Production Item List



| Filter Name | Gas Turbine Intake Air Filter |
|-------------------------------|--------------------------------------------------------------------------|
| Dimensions | Cylindrical \varnothing 406x560L Cylindrical \varnothing 406x870L |
| Filter Class | \leq MERV15 (EN779:2002 / \leq F8) |
| Flow Rate | 30CMM |
| Initial Differential Pressure | \geq 0.44(Inch.H2O) |
| Media | Synthetic(100%) + Nano, Polyester |
| Cap/Core | E.G.I |

Major Production Item List



Cartridge Filter

Veturi Type Cartridge Filter Filter

Pulse Jet Bag Type

Bolt Thread Cartridge Filter

Cylindrical Type



Alternative Filter

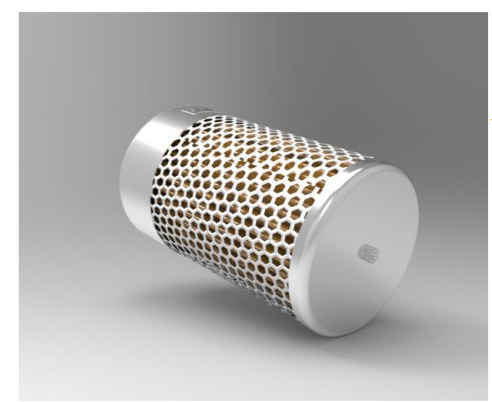
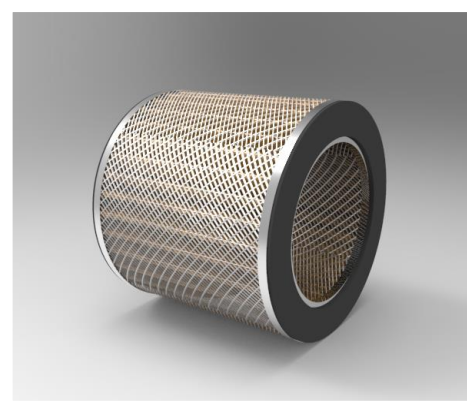
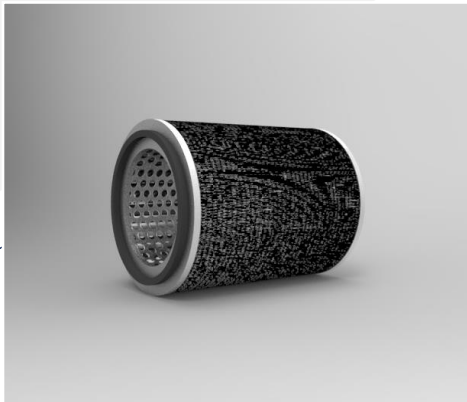
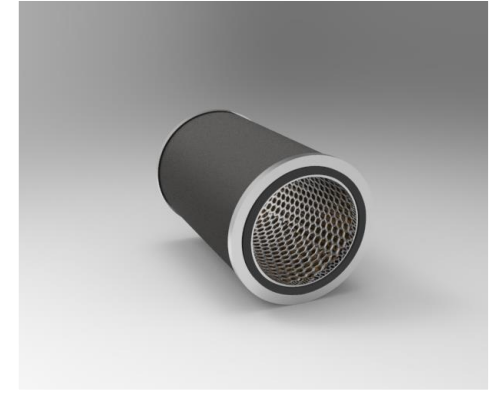
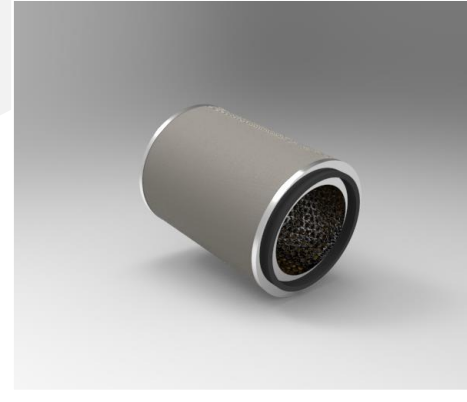
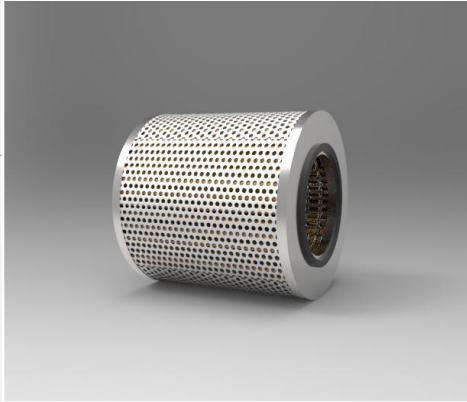
HYDAC Filter

Taisei Kogyo Filter

PALL Filter

MAHLE Filter

Major Production Item List





III. Facilities

Proven Infrastructure

Excellent Production Infrastructure

Assure the product stability and quality based on deep experience and newest machines

Supplying tailor-made solutions

- Develop and manufacture suitable product for all types of environments and all shapes and sizes of filtration
- Supply from small, customer-specific orders all the way to large-scale mass production

State certified level Quality & Analyse

- Newest analytical machine & equipment
- Self quality process ability
- Guarantee the filter life quality test on manufacturing process

Facilities

Massive production infrastructure with certification

- Professional filtration supplement manufacturing skills
- Invest automation of manufacturing process
- Factory with certification ISO9001 - Quality management system throughout the production process



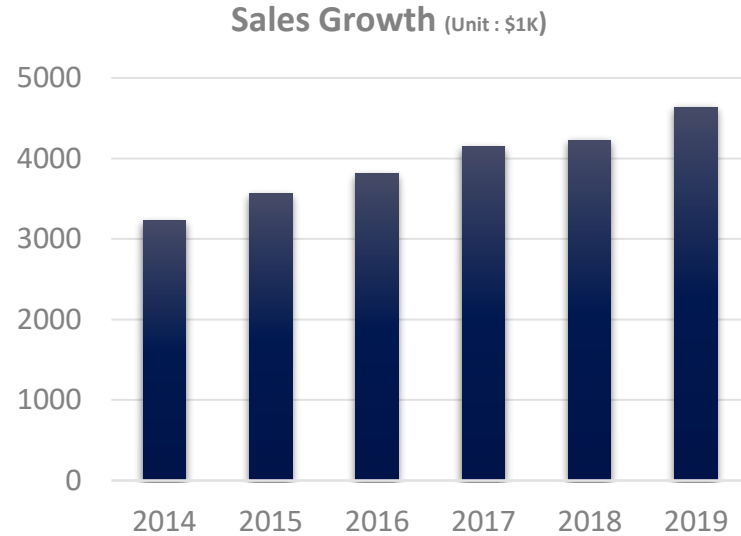
Facilities

Quality Assurance

- Standards EN779 and ASHRAE 52.2 for air filter testing
- Indicator testing
- Internal pressure testing
- Hydraulic pressure testing



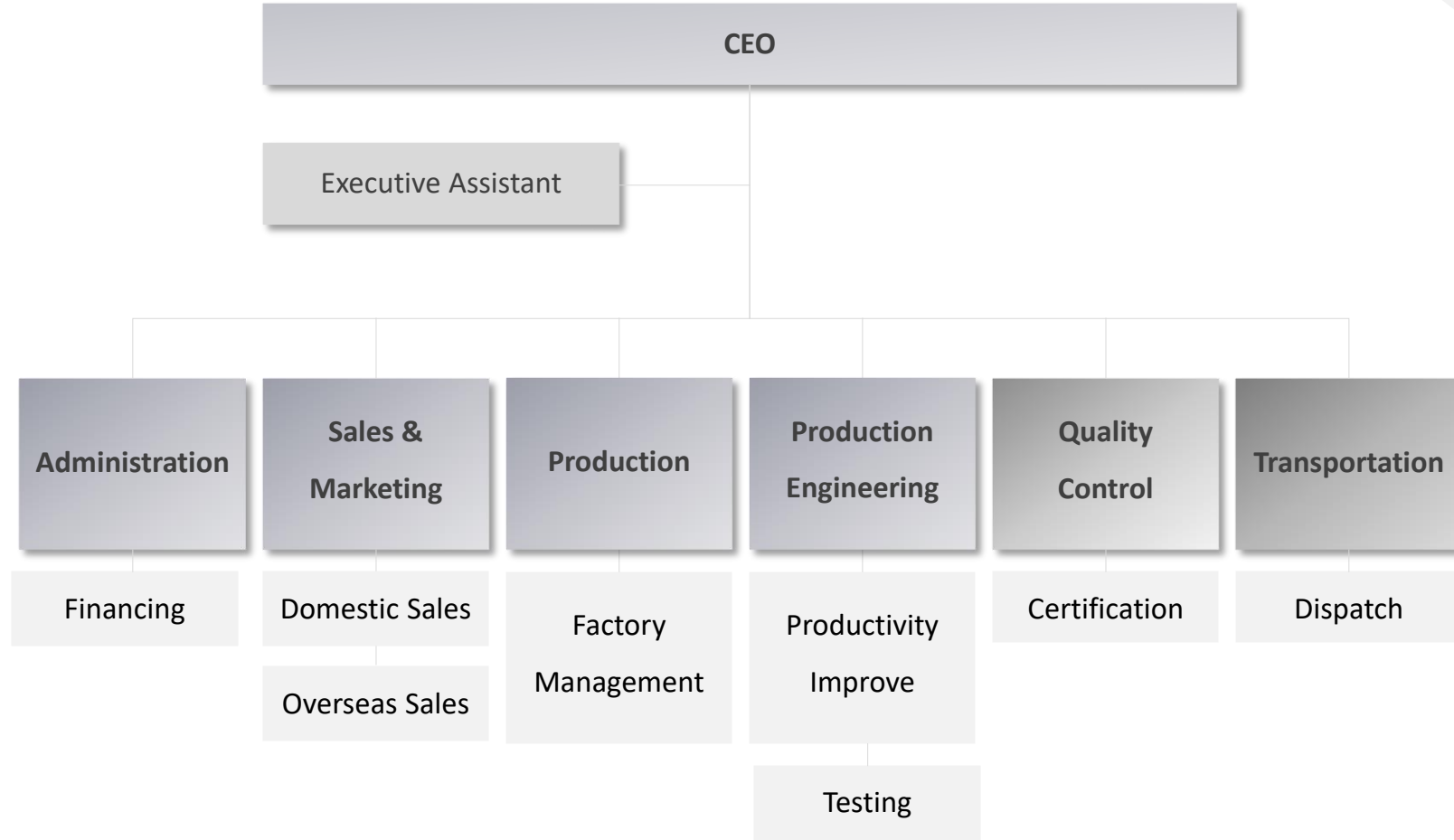
Successful Partner (Customers)



SEDA Filter is a specialized filtration supplement partner who can provide total solution for filtration supplement as an original equipment manufacturer.



Organization Chart



The background features a diagonal split. The upper-left portion is a light grey gradient, while the lower-right portion is white. A thin, dark blue line runs diagonally from the top-left towards the center. Another thin, dark blue line runs diagonally from the bottom-left towards the center. A thin, yellow line runs diagonally from the bottom-right towards the center.

Thank You.